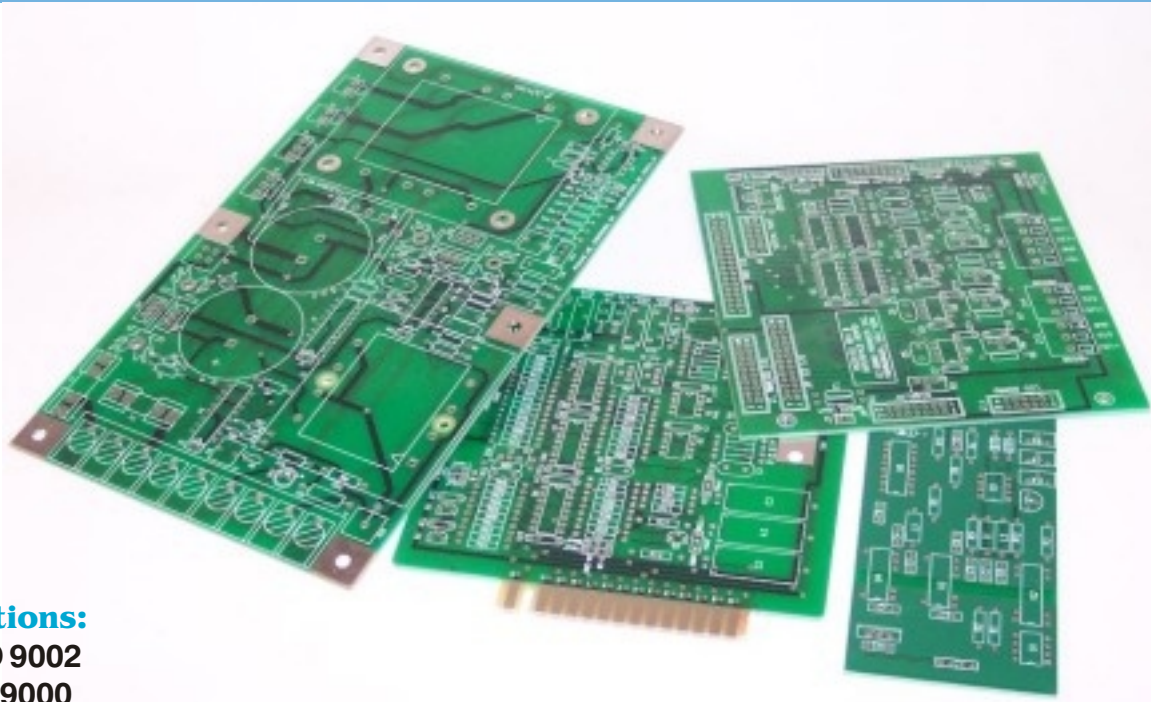


# Your Source for **Printed Circuit Boards**



## **Certifications:**

ISO 9002

QS 9000

## **Technical Capabilities:**

**Layer count:** Single to 16 layers

**Material:** FR-2, FR-4, FR-5, CEM-1, CEM-3, Getek, Halogen Free materials, Aluminum board.

**Panel Format:** V-Score, Route Slot Push Back.

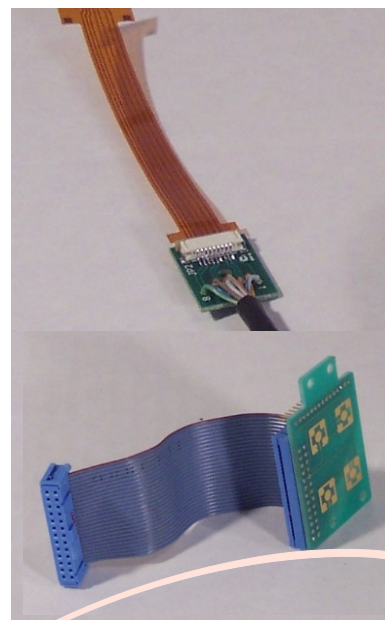
**Max Copper Plating:** 8oz (Finished)

**Solder Mask:** Wet process, Liquid Photo Imagable, Dry film.

**Finishes:** ENTEK 106A, Immersion Gold up to 30u inches, Flash Gold, Copper-plate uup to 8ozCu, HAL.

**Panel size:** 24" x 18" max

**Board size:** 20" x 18" max

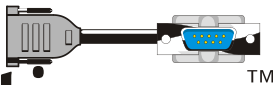


## **YOUR TECHNOLOGY.**

**CONNECTING**

When sending files please keep in mind: Gerber formats should be ODB++, 274x, or 274d. Please include a fab print, an aperture file and a CNC drill file in Excellon format. Also a readme text with job description



**e-cable  
connections**  <sup>TM</sup>

2033 Slaterville Road, Ithaca, New York 14850 USA

Tel 607-539-1129 • Fax 607-539-6882

[www.e-cableconnections.com](http://www.e-cableconnections.com)